

継手基準図 柱、梁接合継手リスト

(1) ボルトピッチ (P), ボルト孔径・最小縁端距離 (mm)

Table with 4 columns: Bolt diameter (呼び径), Bolt hole diameter (孔径), Pitch (フランジ, ウェブ), and End distance (はしあき, ヘリあき). Rows for M16, M20, M22.

(2) ピン接合梁継手リスト

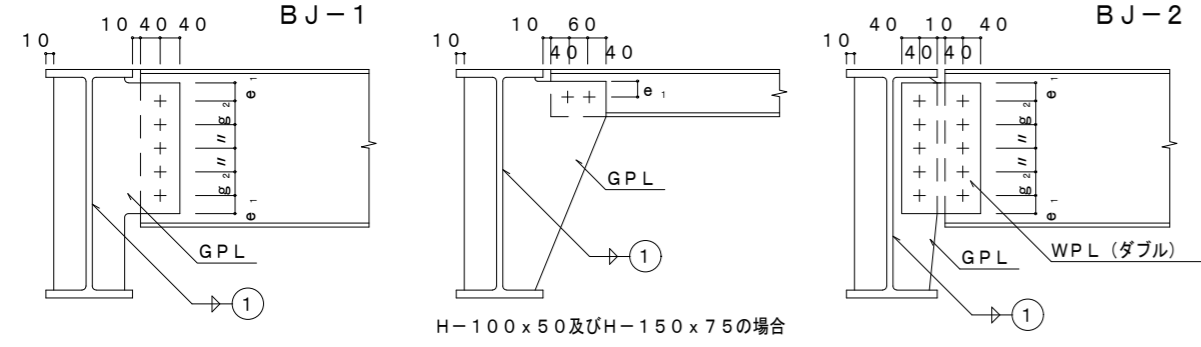


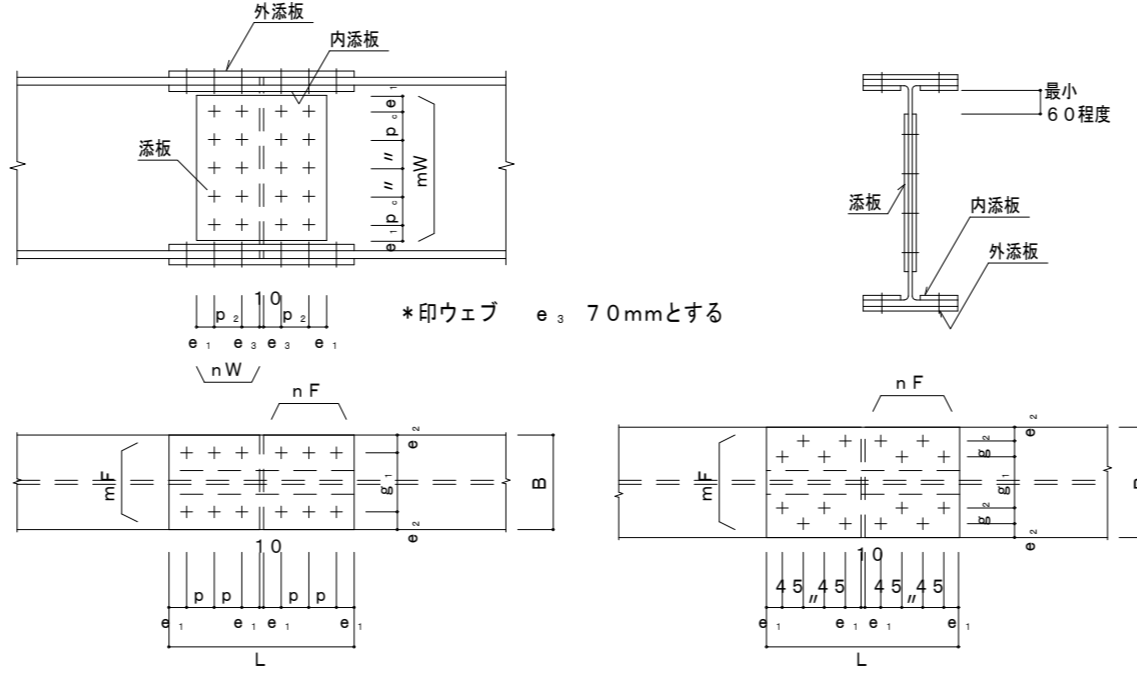
Table for pin joint BJ-1 listing beam type (部材), bolt diameter (ボルト径), number of bolts (本数), GPL thickness (GPL厚), flange add-on plate thickness (ウェブ添板 WPL厚), and notes (備考).

Table for pin joint BJ-2 listing beam type (部材), bolt diameter (ボルト径), number of bolts (本数), GPL thickness (GPL厚), flange add-on plate thickness (ウェブ添板 WPL厚), and notes (備考).

(3) 梁継手, 柱継手 デTAILの共通事項

Table showing common details for beam and column joints, including beam type (H形鋼フランジ幅), bolt grades (高力ボルト使用区分), flange and web dimensions, and notes on pin placement.

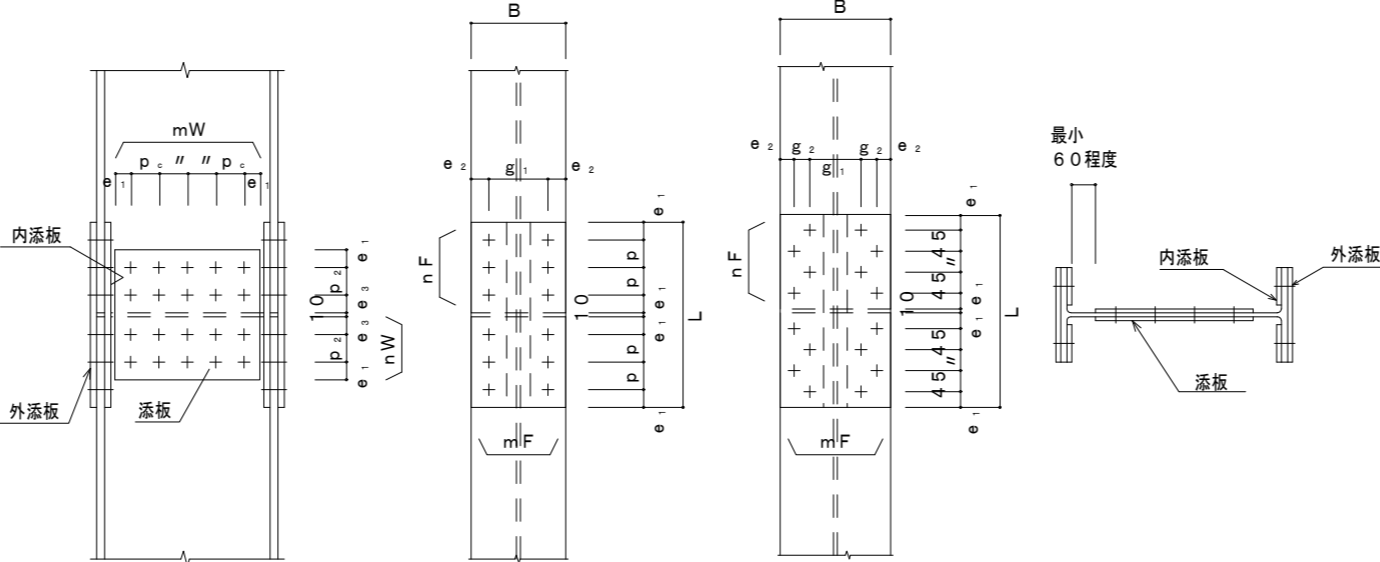
梁 継手リスト



(材質 400N級)

Table listing beam joint specifications including beam type (梁 GJ), bolt diameter (ボルト径), flange details (フランジ), and web details (ウェブ).

柱 継手リスト



\*印ウェブ e3: 7.0mmとする

(材質 400N級)

Table listing column joint specifications including column type (柱 CJ), bolt diameter (ボルト径), flange details (フランジ), and web details (ウェブ).

SCSS-H97による

丸鋼ブレース (JIS規格品とする... JIS A5540~5542)

羽子板ボルト

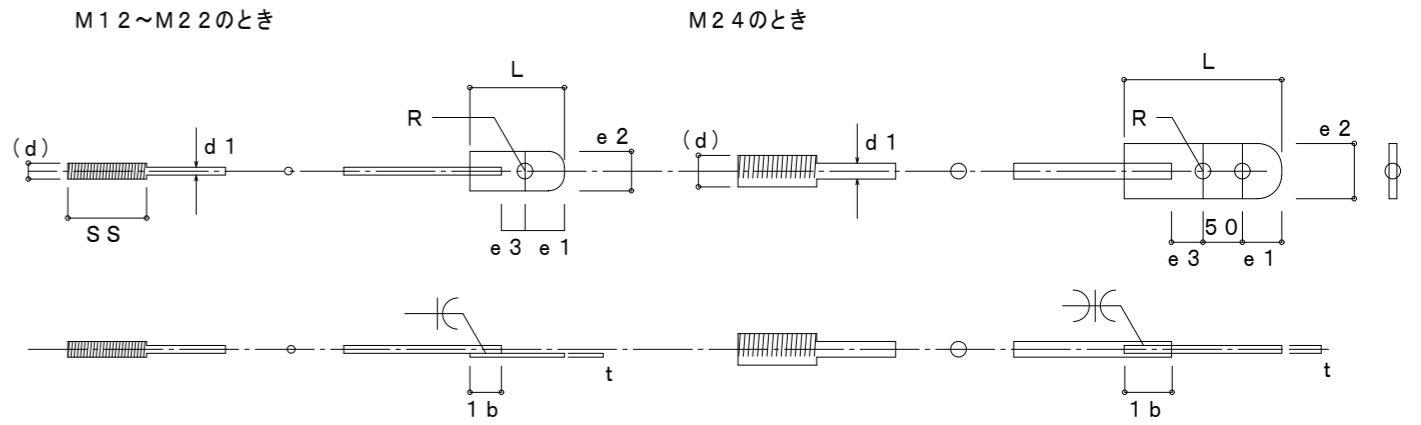


Table of wing plate bolt specifications including nominal diameter (ねじの呼び), thread diameter (軸径), length (調整ねじの長さ), and various dimensions for different sizes.

Notes (1) through (4) explaining dimensions e1, e2, joint types, bolt types, and material references.